

REVISIONS			
REV	DESCRIPTION	DATE	APPROVED

LEGEND :

CABLE ASSY. 2/0, 1.5" DIA

WIRE LOOM, 1/2" DIA.

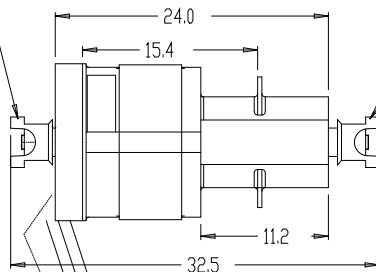
COOLING ASSY.  
12" W X 7.5" H X  
14.0" L

FRONT

CLASS 6 DANA OR MERITOR YOKE  
ON BOTH ENDS FOR  
DRIVE SHAFT MOUNT  
(OR EQUIVALENT)

FRONT YOKE TYPICALLY  
INSTALLS 14-18" BEHIND  
TRANSMISSION

ULTRACAP HOUSING  
DUAL CONTACTOR &  
GFI PROTECTED  
18.2" W X 11.0" H X  
30.0" LONG



CONTROLLER HOUSING  
GFI PROTECTED  
18.2" W X 11.7" H X  
30.0" LONG

COOLANT  
RESERVIOR  
6.6" W X 7.4" H  
X 4.3" D

POWER SOURCE  
+12 v / GND, 30-40 AMPS  
FUSED, SOLENOID  
SWITCHED ON WITH KEY

DRIVER ACCEL. PEDAL

DRIVER DASH PANEL

PSI TRANSDUCER  
ON REAR BRAKE LINE

STANDARD TOLERANCES-  
UNLESS OTHERWISE NOTED:  
0.00 = +/- .010"  
0.000 = +/- .003  
0.0000 = +/- .0010"

VARIABLE TORQUE MOTORS, LLC  
4501 EAGHART LN.  
FT. WAYNE, IN 46809  
TOLL FREE (888)-747-6633  
HYBRID SYS. OUTLINE- CL.6\_R02

CADKEY DATABASE -  
NO MANUAL REVISIONS

SIZE B  
SCALE

FSCM NO.

DWG NO.

REV

SHEET 1 OF 1